



Title Plan - LT 558987

Survey Number LT 558987
Surveyor Reference 1813 - Pokeno Stage 10 E & F
Surveyor Campbell Lloyd Harvey
Survey Firm Civilplan Consultants Limited
Surveyor Declaration

Survey Details

Dataset Description Lots 4, 5, 10, 548 - 558, 564 - 568, 570 - 592 & 1016 Being a Subdivision of Lot 1015 DP 556992
Status Initiated
Land District North Auckland
Submitted Date
Survey Class Class A
Survey Approval Date
Deposit Date

Territorial Authorities

Waikato District

Comprised In

RT 975868

Created Parcels

Parcels	Parcel Intent	Area	RT Reference
Lot 4 Deposited Plan 558987	Fee Simple Title	0.0288 Ha	Multiple
Lot 5 Deposited Plan 558987	Fee Simple Title	0.0272 Ha	Multiple
Lot 10 Deposited Plan 558987	Vesting on Deposit for Road	0.5942 Ha	
Lot 548 Deposited Plan 558987	Fee Simple Title	0.0635 Ha	984608
Lot 549 Deposited Plan 558987	Fee Simple Title	0.0612 Ha	984609
Lot 550 Deposited Plan 558987	Fee Simple Title	0.0606 Ha	984610
Lot 551 Deposited Plan 558987	Fee Simple Title	0.0650 Ha	984611
Lot 552 Deposited Plan 558987	Fee Simple Title	0.0582 Ha	984612
Lot 553 Deposited Plan 558987	Fee Simple Title	0.0463 Ha	984613
Lot 554 Deposited Plan 558987	Fee Simple Title	0.0459 Ha	984614
Lot 555 Deposited Plan 558987	Fee Simple Title	0.0459 Ha	984615
Lot 556 Deposited Plan 558987	Fee Simple Title	0.0459 Ha	984616
Lot 557 Deposited Plan 558987	Fee Simple Title	0.0459 Ha	984617
Lot 558 Deposited Plan 558987	Fee Simple Title	0.0459 Ha	984618
Lot 564 Deposited Plan 558987	Fee Simple Title	0.0706 Ha	984619
Lot 565 Deposited Plan 558987	Fee Simple Title	0.0635 Ha	984620
Lot 566 Deposited Plan 558987	Fee Simple Title	0.0637 Ha	984621
Lot 567 Deposited Plan 558987	Fee Simple Title	0.0569 Ha	984622
Lot 568 Deposited Plan 558987	Fee Simple Title	0.0970 Ha	984623
Lot 570 Deposited Plan 558987	Fee Simple Title	0.0667 Ha	984624
Lot 571 Deposited Plan 558987	Fee Simple Title	0.0561 Ha	984625
Lot 572 Deposited Plan 558987	Fee Simple Title	0.0670 Ha	984626
Lot 573 Deposited Plan 558987	Fee Simple Title	0.0671 Ha	984627

Title Plan - LT 558987

Created Parcels

Parcels	Parcel Intent	Area	RT Reference
Lot 574 Deposited Plan 558987	Fee Simple Title	0.0670 Ha	984628
Lot 575 Deposited Plan 558987	Fee Simple Title	0.0670 Ha	984629
Lot 576 Deposited Plan 558987	Fee Simple Title	0.0617 Ha	984630
Lot 577 Deposited Plan 558987	Fee Simple Title	0.0730 Ha	984631
Lot 578 Deposited Plan 558987	Fee Simple Title	0.0615 Ha	984632
Lot 579 Deposited Plan 558987	Fee Simple Title	0.0624 Ha	984633
Lot 580 Deposited Plan 558987	Fee Simple Title	0.0666 Ha	984634
Lot 581 Deposited Plan 558987	Fee Simple Title	0.0670 Ha	984635
Lot 582 Deposited Plan 558987	Fee Simple Title	0.0600 Ha	984636
Lot 583 Deposited Plan 558987	Fee Simple Title	0.0599 Ha	984637
Lot 584 Deposited Plan 558987	Fee Simple Title	0.0599 Ha	984638
Lot 585 Deposited Plan 558987	Fee Simple Title	0.0599 Ha	984639
Lot 586 Deposited Plan 558987	Fee Simple Title	0.0627 Ha	984640
Lot 587 Deposited Plan 558987	Fee Simple Title	0.0619 Ha	984641
Lot 588 Deposited Plan 558987	Fee Simple Title	0.0594 Ha	984642
Lot 589 Deposited Plan 558987	Fee Simple Title	0.0594 Ha	984643
Lot 590 Deposited Plan 558987	Fee Simple Title	0.0594 Ha	984644
Lot 591 Deposited Plan 558987	Fee Simple Title	0.0625 Ha	984645
Lot 592 Deposited Plan 558987	Fee Simple Title	0.0594 Ha	984646
Lot 1016 Deposited Plan 558987	Fee Simple Title	0.5755 Ha	984647
Area D Deposited Plan 558987	Easement		
Area E Deposited Plan 558987	Easement		
Area N Deposited Plan 558987	Easement		
Area O Deposited Plan 558987	Easement		
Area P Deposited Plan 558987	Easement		
Area Q Deposited Plan 558987	Easement		
Area R Deposited Plan 558987	Easement		
Area S Deposited Plan 558987	Easement		
Area T Deposited Plan 558987	Easement		
Area U Deposited Plan 558987	Easement		
Total Area		<hr/> 3.6092 Ha	

Schedule / Memorandum

Land Registration District

North Auckland

Plan Number

DP 558987

Territorial Authority (the Council)

Waikato District Council – TA Reference: SUB0276/18.03

Memorandum of Easements in Gross (Pursuant to s243 Resource Management Act 1991)			
Purpose	Shown	Burdened Land	Grantee
Right to convey telecommunications	D	Lot 4 hereon	Chorus New Zealand Ltd
	E	Lot 5 hereon	
Right to convey water	D	Lot 4 hereon	Waikato District Council
	E	Lot 5 hereon	
Right to drain sewage and water	D	Lot 4 hereon	Waikato District Council
	E	Lot 5 hereon	
	N	Lot 570 hereon	
	O	Lot 572 hereon	
	P	Lot 573 hereon	
	Q	Lot 574 hereon	
	R	Lot 575 hereon	
	S	Lot 576 hereon	
Right to drain water	T	Lot 577 hereon	Waikato District Council
	U	Lot 579 hereon	

Schedule / Memorandum

Land Registration District

North Auckland

Plan Number

DP 558987

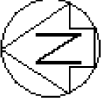
Territorial Authority (the Council)

Waikato District Council – TA Reference: SUB0276/18.03

Amalgamation Conditions:

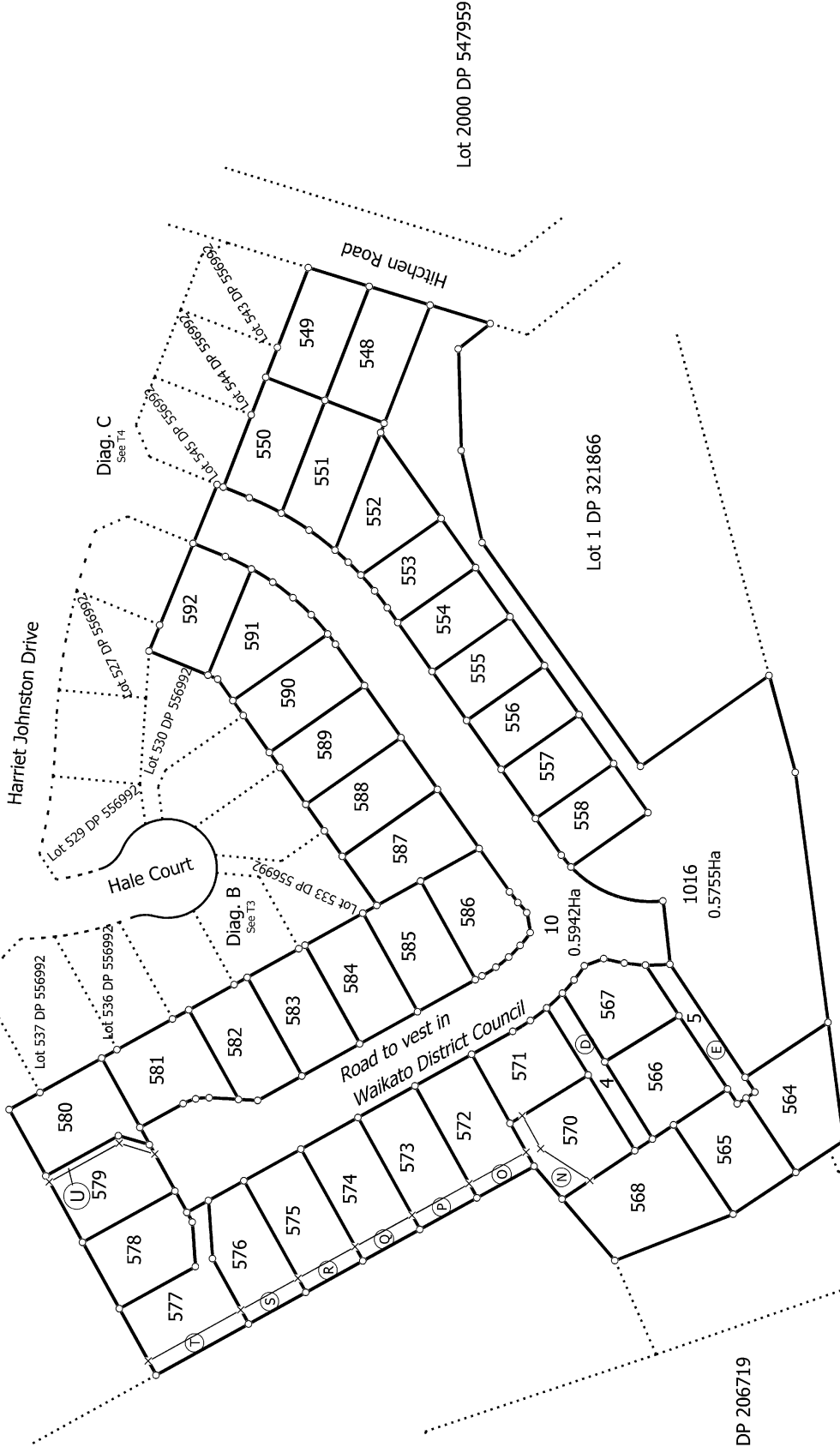
That Lot 4 DP 558987 (legal access) be held as to two undivided one-half shares by the owners of Lots 568 and 570 DP 558987 as tenants in common in the said shares and that individual records of title be issued in accordance therewith (see LINZ request 1621950).

That Lot 5 DP 558987 (legal access) be held as to three undivided one-third shares by the owners of Lots 564 - 566 DP 558987 as tenants in common in the said shares and that individual records of title be issued in accordance therewith (see LINZ request 1521424).



Lot 101 DP 556992

Diag. A
See T2



1813 - Pokeno Stage 10 E & F

Land District: North Auckland

Digitally Generated Plan

Generated on: 16/04/2021 11:33am | Page 5 of 8

Lots 4, 5, 10, 548 - 558, 564 - 568, 570 - 592 & 1016 Being a Subdivision of Lot 1015 DP 556992

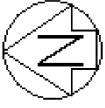
Surveyor: Campbell Lloyd Harvey
Firm: Civilplan Consultants Limited

**Title Plan
LT 558987
DRAFT**

T 1/4

Diag. A





Diag. B

Lot 533 DP 556992



T 3/4

Land District: North Auckland

Digitally Generated Plan

Generated on: 16/04/2021 11:33am Page 7 of 8

Lots 4, 5, 10, 548 - 558, 564 - 568, 570 - 592 & 1016 Being a Subdivision of Lot 1015 DP 556992

Surveyor: Campbell Lloyd Harvey
Firm: Civilplan Consultants Limited

Title Plan
LT 558987
DRAFT



Diag. C



Land District: North Auckland
 Digitally Generated Plan
 Generated on: 16/04/2021 11:33am Page 8 of 8

Lots 4, 5, 10, 548 - 558, 564 - 568, 570 - 592 & 1016 Being a Subdivision of Lot 1015 DP 556992

Surveyor: Campbell Lloyd Harvey
 Firm: Civilplan Consultants Limited

Title Plan
 LT 558987
 DRAFT