



# Title Plan - LT 534284

---

**Survey Number** LT 534284  
**Surveyor Reference** 2102 DFH Hitchen Stage 8ab  
**Surveyor** Campbell Lloyd Harvey  
**Survey Firm** Civilplan Consultants Limited  
**Surveyor Declaration**

---

## Survey Details

**Dataset Description** Easement over Lot 1011 DP 530642 and Lots 1-3, 367-381, 396-432, 1001, 1012 and 1013 being a Subdivision of Lot 1 DP 205679 and Lot 1011 DP 530642

**Status** Initiated

**Land District** North Auckland **Survey Class** Class A

**Submitted Date** **Survey Approval Date**  
**Deposit Date**

---

## Territorial Authorities

Waikato District

---

## Comprised In

RT NA132C/454  
RT 863919

---

## Created Parcels

Parcels	Parcel Intent	Area	RT Reference
Lot 2 Deposited Plan 534284	Vesting on Deposit for Road	0.3801 Ha	
Lot 3 Deposited Plan 534284	Vesting on Deposit for Local Purpose Reserve	1.1239 Ha	882149
Lot 367 Deposited Plan 534284	Fee Simple Title	0.0631 Ha	882150
Lot 368 Deposited Plan 534284	Fee Simple Title	0.0613 Ha	882151
Lot 369 Deposited Plan 534284	Fee Simple Title	0.0575 Ha	882152
Lot 370 Deposited Plan 534284	Fee Simple Title	0.0576 Ha	882153
Lot 371 Deposited Plan 534284	Fee Simple Title	0.0576 Ha	882154
Lot 372 Deposited Plan 534284	Fee Simple Title	0.0576 Ha	882155
Lot 373 Deposited Plan 534284	Fee Simple Title	0.0576 Ha	882156
Lot 374 Deposited Plan 534284	Fee Simple Title	0.0576 Ha	882157
Lot 375 Deposited Plan 534284	Fee Simple Title	0.0576 Ha	882158
Lot 376 Deposited Plan 534284	Fee Simple Title	0.0582 Ha	882159
Lot 377 Deposited Plan 534284	Fee Simple Title	0.0593 Ha	882160
Lot 378 Deposited Plan 534284	Fee Simple Title	0.0593 Ha	882161
Lot 379 Deposited Plan 534284	Fee Simple Title	0.0618 Ha	882162
Lot 380 Deposited Plan 534284	Fee Simple Title	0.0706 Ha	882163
Lot 381 Deposited Plan 534284	Fee Simple Title	0.0616 Ha	882164
Lot 396 Deposited Plan 534284	Fee Simple Title	0.0624 Ha	882165
Lot 397 Deposited Plan 534284	Fee Simple Title	0.0634 Ha	882166
Lot 398 Deposited Plan 534284	Fee Simple Title	0.0624 Ha	882167

# Title Plan - LT 534284

---

## Created Parcels

Parcels	Parcel Intent	Area	RT Reference
Lot 399 Deposited Plan 534284	Fee Simple Title	0.0713 Ha	882168
Lot 400 Deposited Plan 534284	Fee Simple Title	0.0615 Ha	882169
Lot 401 Deposited Plan 534284	Fee Simple Title	0.0603 Ha	882170
Lot 402 Deposited Plan 534284	Fee Simple Title	0.0566 Ha	882171
Lot 403 Deposited Plan 534284	Fee Simple Title	0.0557 Ha	882172
Lot 404 Deposited Plan 534284	Fee Simple Title	0.0601 Ha	882173
Lot 405 Deposited Plan 534284	Fee Simple Title	0.0650 Ha	882174
Lot 406 Deposited Plan 534284	Fee Simple Title	0.0603 Ha	882175
Lot 407 Deposited Plan 534284	Fee Simple Title	0.0603 Ha	882176
Lot 408 Deposited Plan 534284	Fee Simple Title	0.0603 Ha	882177
Lot 409 Deposited Plan 534284	Fee Simple Title	0.0603 Ha	882178
Lot 410 Deposited Plan 534284	Fee Simple Title	0.0603 Ha	882179
Lot 411 Deposited Plan 534284	Fee Simple Title	0.0589 Ha	882180
Lot 412 Deposited Plan 534284	Fee Simple Title	0.0569 Ha	882181
Lot 413 Deposited Plan 534284	Fee Simple Title	0.0702 Ha	882182
Lot 414 Deposited Plan 534284	Fee Simple Title	0.0663 Ha	882183
Lot 415 Deposited Plan 534284	Fee Simple Title	0.0621 Ha	882184
Lot 416 Deposited Plan 534284	Fee Simple Title	0.0626 Ha	882185
Lot 417 Deposited Plan 534284	Fee Simple Title	0.0626 Ha	882186
Lot 418 Deposited Plan 534284	Fee Simple Title	0.0626 Ha	882187
Lot 419 Deposited Plan 534284	Fee Simple Title	0.0626 Ha	882188
Lot 420 Deposited Plan 534284	Fee Simple Title	0.0663 Ha	882189
Lot 421 Deposited Plan 534284	Fee Simple Title	0.0576 Ha	882190
Lot 422 Deposited Plan 534284	Fee Simple Title	0.0576 Ha	882191
Lot 423 Deposited Plan 534284	Fee Simple Title	0.0576 Ha	882192
Lot 424 Deposited Plan 534284	Fee Simple Title	0.0623 Ha	882193
Lot 425 Deposited Plan 534284	Fee Simple Title	0.0657 Ha	882194
Lot 426 Deposited Plan 534284	Fee Simple Title	0.0622 Ha	882195
Lot 427 Deposited Plan 534284	Fee Simple Title	0.0572 Ha	882196
Lot 428 Deposited Plan 534284	Fee Simple Title	0.0762 Ha	882197
Lot 429 Deposited Plan 534284	Fee Simple Title	0.0548 Ha	882198
Lot 430 Deposited Plan 534284	Fee Simple Title	0.0548 Ha	882199
Lot 431 Deposited Plan 534284	Fee Simple Title	0.0548 Ha	882200
Lot 432 Deposited Plan 534284	Fee Simple Title	0.0611 Ha	882201
Lot 1001 Deposited Plan 534284	Fee Simple Title	0.8113 Ha	882202
Lot 1012 Deposited Plan 534284	Fee Simple Title	1.8127 Ha	882203
Lot 1013 Deposited Plan 534284	Fee Simple Title	14.8126 Ha	882204
Area A Deposited Plan 534284	Easement		
Area B Deposited Plan 534284	Easement		
Lot 1 Deposited Plan 534284	Vesting on Deposit for Road	0.8211 Ha	
Area C Deposited Plan 534284	Easement		
<b>Total Area</b>		<b>22.9332 Ha</b>	

# Schedule / Memorandum

Land Registration District

**North Auckland**

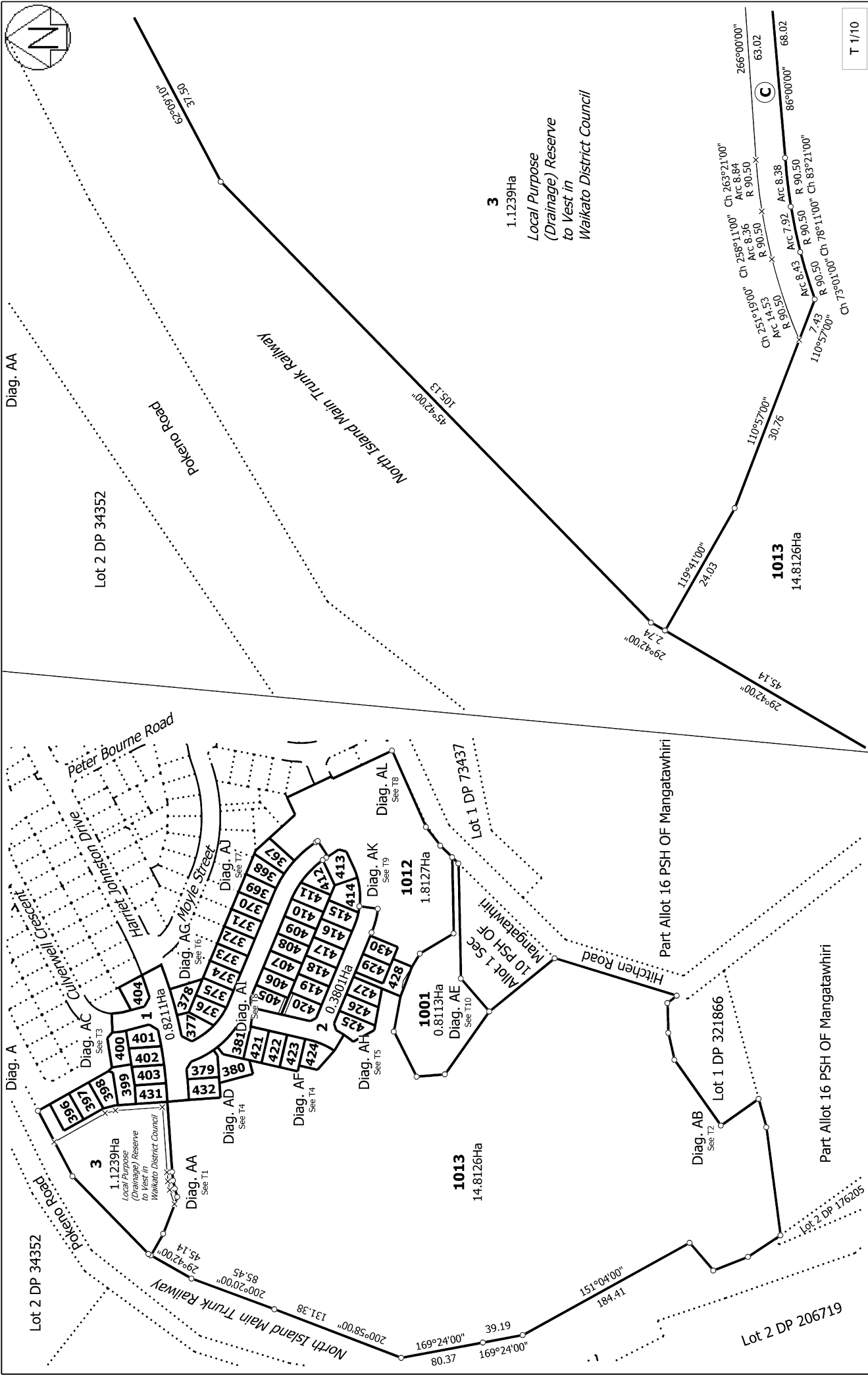
Plan Number

**DP 534284**

Territorial Authority (the Council)

Waikato District Council – TA Reference: SUB0135/18

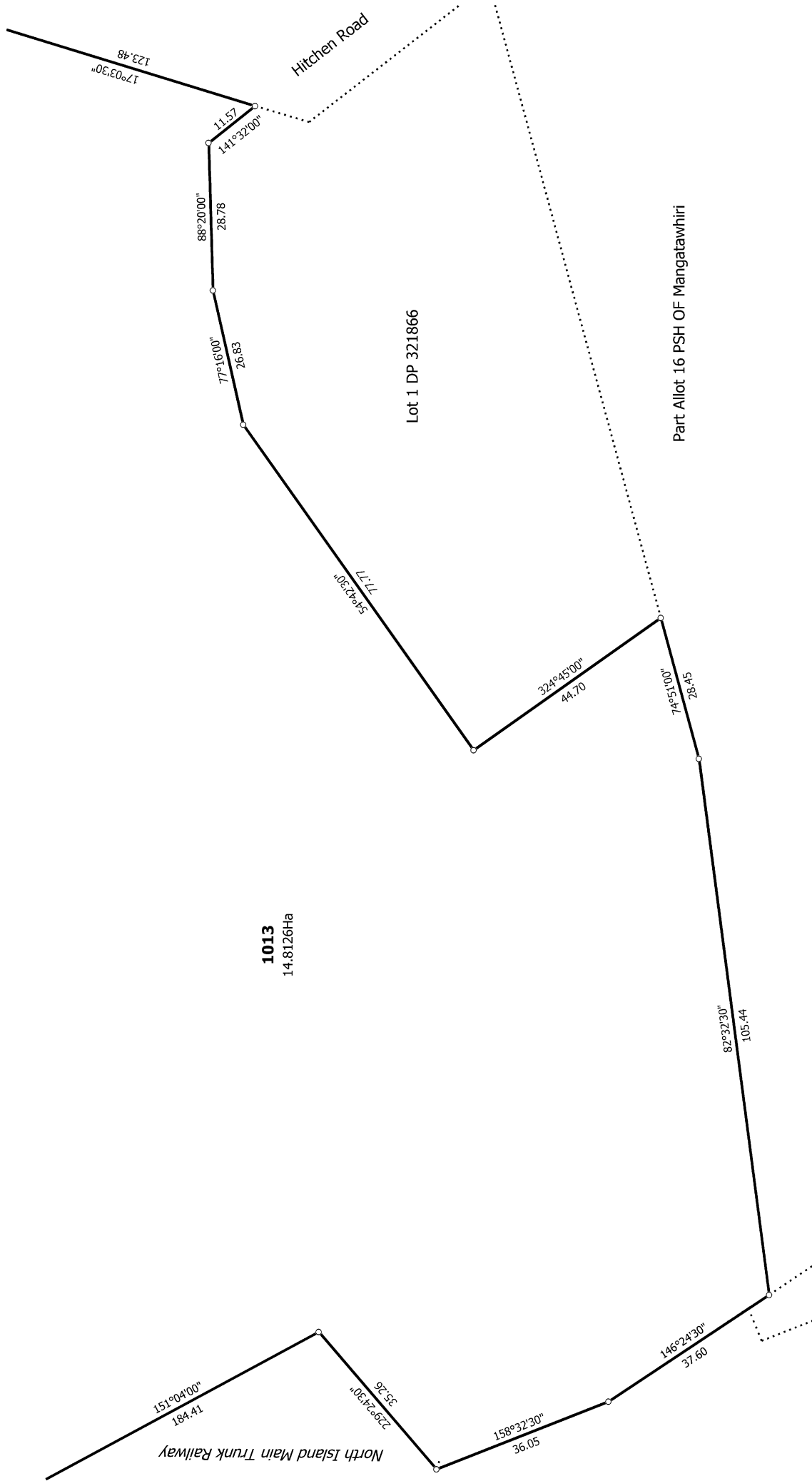
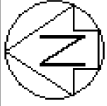
<b>Memorandum of Easements in Gross</b> (Pursuant to s243 Resource Management Act 1991)			
<b>Purpose</b>	<b>Shown</b>	<b>Servient Tenement (Burdened Land)</b>	<b>Grantee</b>
Drainage	A	Lot 405 hereon	Waikato District Council
	B	Lot 420 hereon	
Right to Convey Power	C	Lot 1011 DP 530642	Counties Power



T 1/10

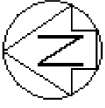
<p>Land District: North Auckland</p> <p><b>Digitally Generated Plan</b></p> <p>Generated on: 28/05/2019 4:42pm Page 4 of 13</p>	<p>Easement over Lot 1011 DP 530642 and Lots 1-3, 367-381, 396-432, 1001, 1012 and 1013 being a Subdivision of Lot 1 DP 205679 and Lot 1011 DP 530642</p>	<p>Surveyor: Campbell Lloyd Harvey Firm: Civilplan Consultants Limited</p>	<p><b>Title Plan</b> LT 534284 DRAFT</p>
---	---	--	--

Diag. AB



<p>Land District: North Auckland</p> <p><b>Digitally Generated Plan</b></p> <p><small>Generated on: 28/05/2019 4:42pm Page 5 of 13</small></p>	<p><b>Easement over Lot 1011 DP 530642 and Lots 1-3, 367-381, 396-432, 1001, 1012 and 1013 being a Subdivision of Lot 1 DP 205679 and Lot 1011 DP 530642</b></p>	<p>Surveyor: Campbell Lloyd Harvey Firm: Civilplan Consultants Limited</p>	<p>Title Plan LT 534284 DRAFT</p>
--	--	--	---

T 2/10



T 3/10

Land District: North Auckland  
 Digitally Generated Plan  
 Generated on: 28/05/2019 4:42pm Page 6 of 13

Easement over Lot 1011 DP 530642 and Lots 1-3, 367-381, 396-432, 1001, 1012 and 1013 being a Subdivision of Lot 1 DP 205679 and Lot 1011 DP 530642

Surveyor: Campbell Lloyd Harvey  
 Firm: Civilplan Consultants Limited

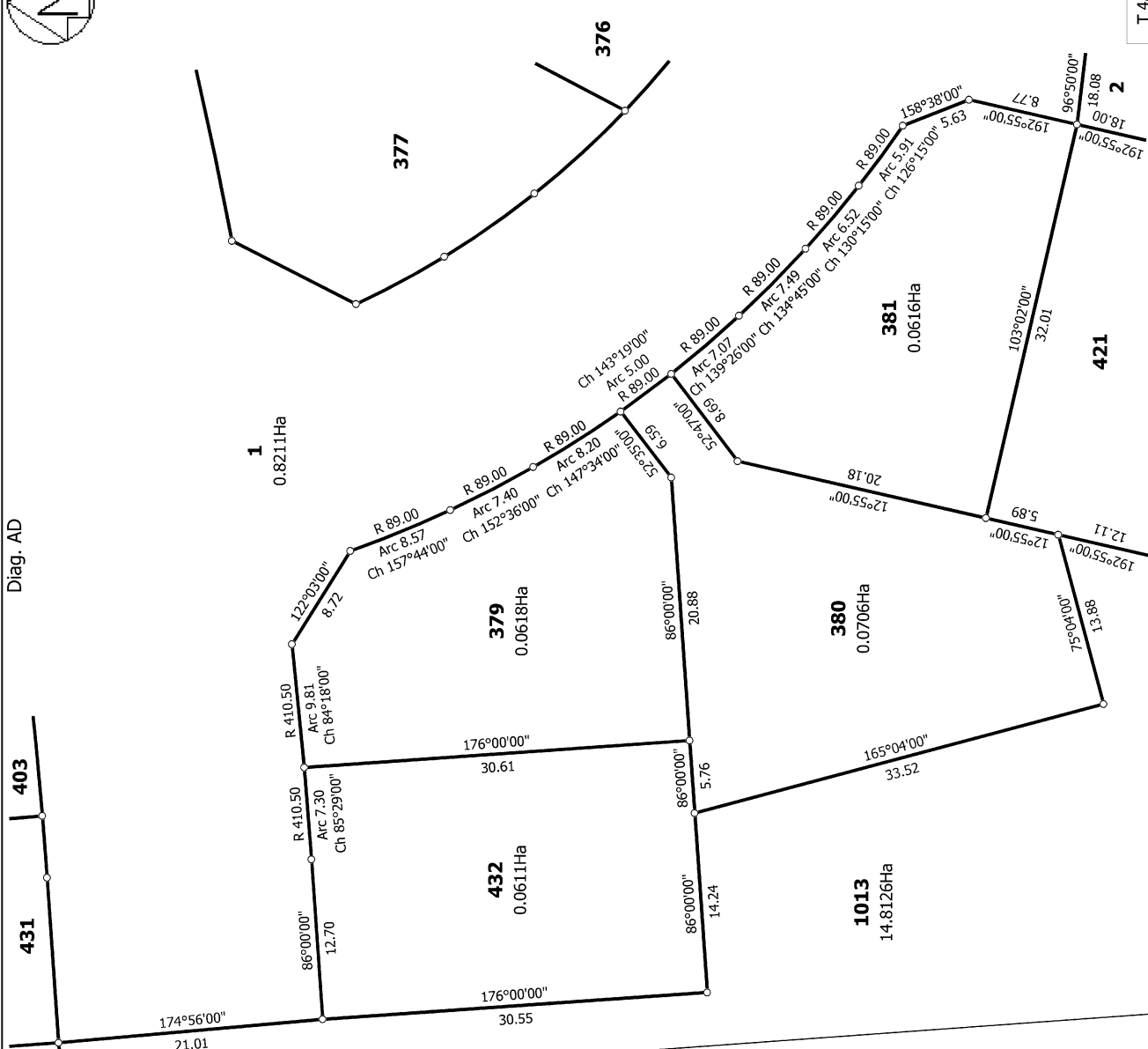
Title Plan  
 LT 534284  
 DRAFT



Diag. AD

431 403

3 (C)



T 4/10

Diag. AF

381 380

382 383

384 385

386 387

388 389

390 391

392 393

394 395

396 397

398 399

400 401

402 403

404 405

406 407

408 409

410 411

412 413

414 415

416 417

418 419

420 421

422 423

424 425

426 427

428 429

430 431

432 433

434 435

436 437

438 439

440 441

442 443

444 445

446 447

448 449

450 451

452 453

454 455

456 457

458 459

460 461

462 463

464 465

466 467

468 469

470 471

472 473

474 475

476 477

478 479

480 481

482 483

484 485

486 487

488 489

490 491

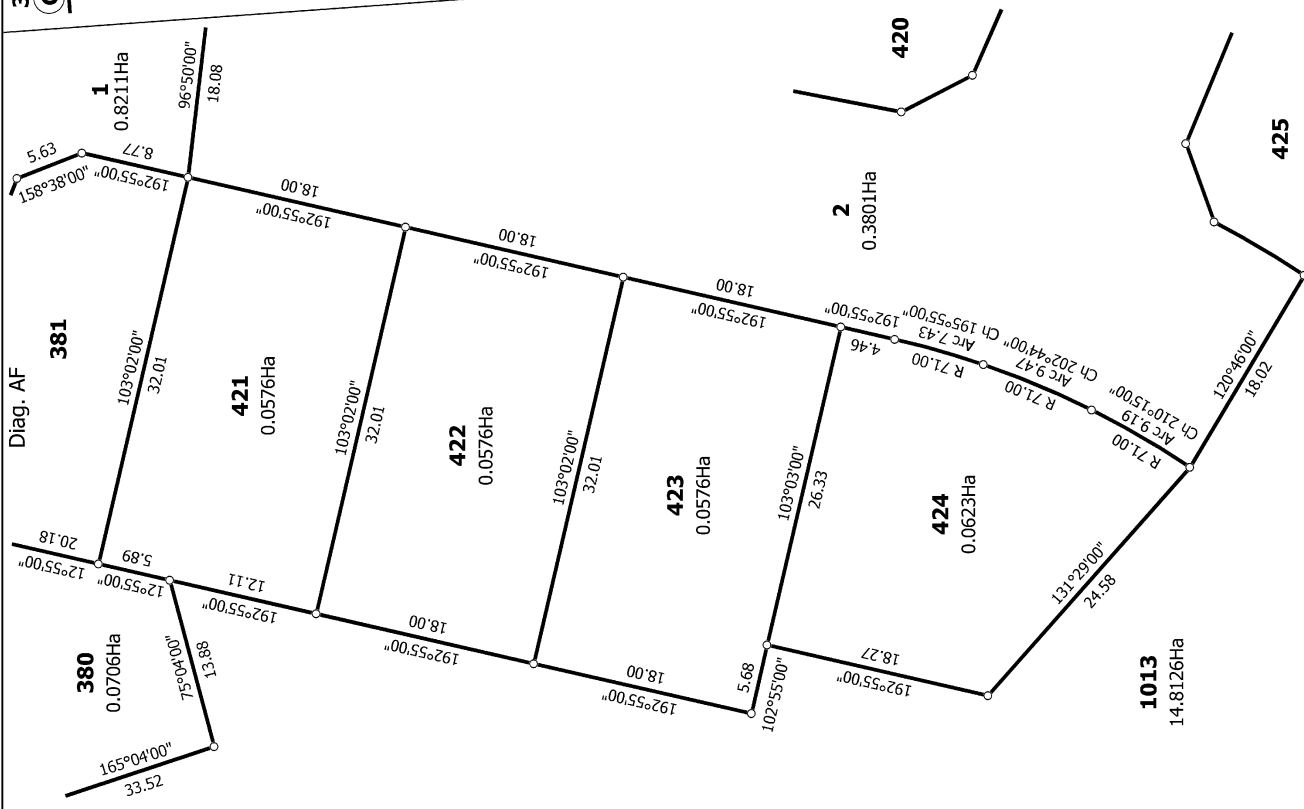
492 493

494 495

496 497

498 499

500



Easement over Lot 1011 DP 530642 and Lots 1-3, 367-381, 396-432, 1001, 1012 and 1013 being a Subdivision of Lot 1 DP 205679 and Lot 1011 DP 530642

Title Plan  
LT 534284  
DRAFT

Surveyor: Campbell Lloyd Harvey  
Firm: Civilplan Consultants Limited

Land District: North Auckland  
Digitally Generated Plan  
Generated on: 28/05/2019 4:42pm Page 7 of 13



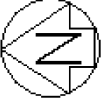
T 5/10

Easement over Lot 1011 DP 530642 and Lots 1-3, 367-381, 396-432, 1001, 1012 and 1013 being a Subdivision of Lot 1 DP 205679 and Lot 1011 DP 530642

Surveyor: Campbell Lloyd Harvey  
 Firm: Civilplan Consultants Limited

Title Plan  
 LT 534284  
 DRAFT





T 6/10

Land District: North Auckland  
 Digitally Generated Plan  
 Generated on: 28/05/2019 4:42pm Page 9 of 13

Easement over Lot 1011 DP 530642 and Lots 1-3, 367-381, 396-432, 1001, 1012 and 1013 being a Subdivision of Lot 1 DP 205679 and Lot 1011 DP 530642

Surveyor: Campbell Lloyd Harvey  
 Firm: Civilplan Consultants Limited

Title Plan  
 LT 534284  
 DRAFT



T 7/10

Land District: North Auckland	Surveyor: Campbell Lloyd Harvey Firm: Civilplan Consultants Limited	Easement over Lot 1011 DP 530642 and Lots 1-3, 367-381, 396-432, 1001, 1012 and 1013 being a Subdivision of Lot 1 DP 205679 and Lot 1011 DP 530642	Title Plan LT 534284 DRAFT
-------------------------------	--	--	----------------------------------



T 8/10

Land District: North Auckland  
 Digitally Generated Plan  
 Generated on: 28/05/2019 4:42pm Page 11 of 13

Easement over Lot 1011 DP 530642 and Lots 1-3, 367-381, 396-432, 1001, 1012 and 1013 being a Subdivision of Lot 1 DP 205679 and Lot 1011 DP 530642

Surveyor: Campbell Lloyd Harvey  
 Firm: Civilplan Consultants Limited

Title Plan  
 LT 534284  
 DRAFT



T 9/10

Land District: North Auckland  
 Digitally Generated Plan  
 Generated on: 28/05/2019 4:42pm Page 12 of 13

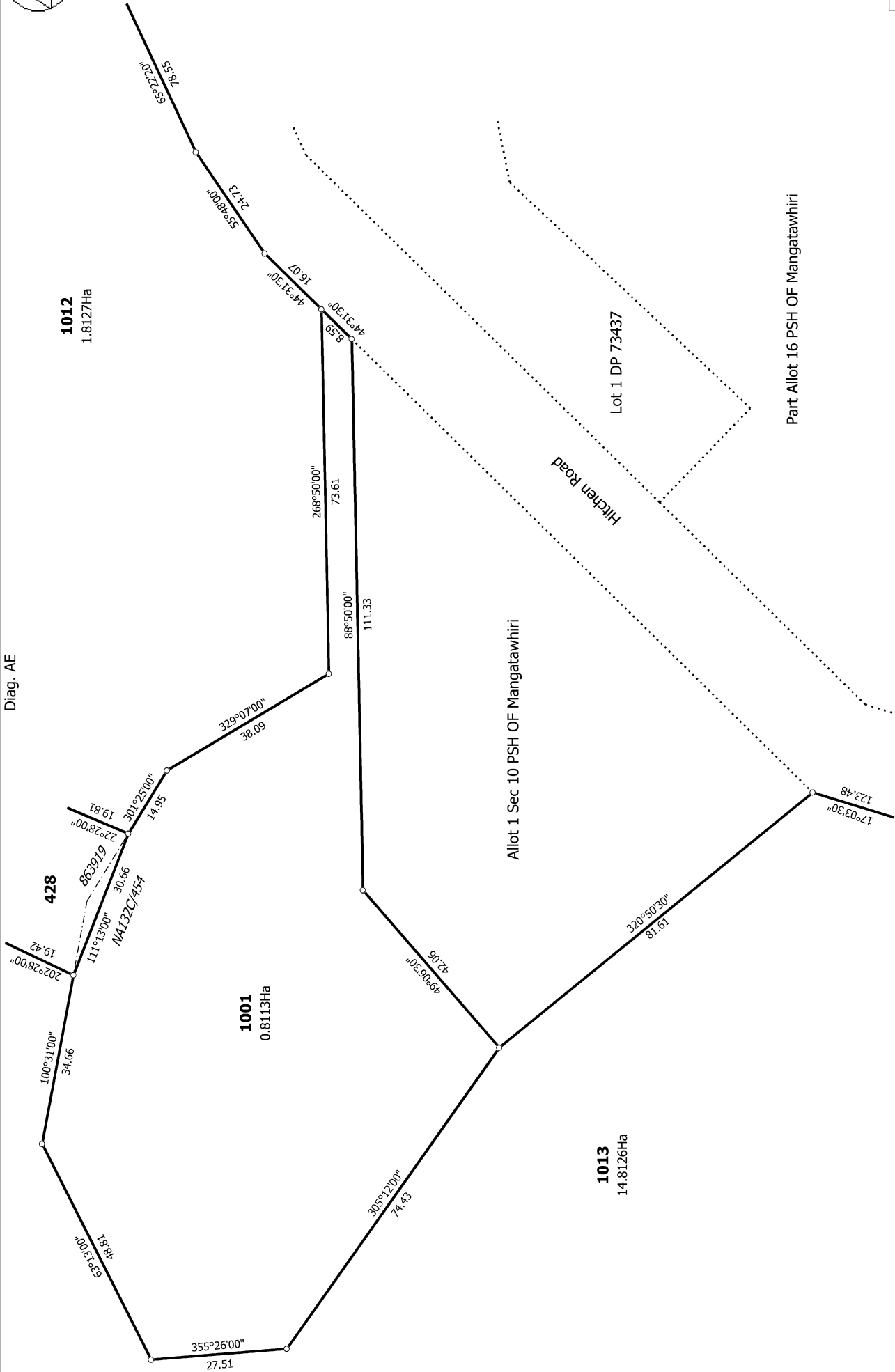
Easement over Lot 1011 DP 530642 and Lots 1-3, 367-381, 396-432, 1001, 1012 and 1013 being a Subdivision of Lot 1 DP 205679 and Lot 1011 DP 530642

Surveyor: Campbell Lloyd Harvey  
 Firm: Civilplan Consultants Limited

Title Plan  
 LT 534284  
 DRAFT



Diag. AE



**1012**  
1.8127Ha

**1001**  
0.8113Ha

**1013**  
14.8126Ha

**428**

Lot 1 DP 73437

Allot 1 Sec 10 PSH OF Mangatawhiri

Part Allot 16 PSH OF Mangatawhiri

Hickien Road

T 10/10

Land District: North Auckland

**Digitally Generated Plan**

Generated on: 28/05/2019 4:42pm Page 13 of 13

Easement over Lot 1011 DP 530642 and Lots 1-3, 367-381, 396-432, 1001, 1012 and 1013 being a Subdivision of Lot 1 DP 205679 and Lot 1011 DP 530642

Surveyor: Campbell Lloyd Harvey  
Firm: Civilplan Consultants Limited

Title Plan  
LT 534284  
DRAFT